

ENTERPRISE-WIDE UNIFIED COMMUNICATIONS MADE EASY

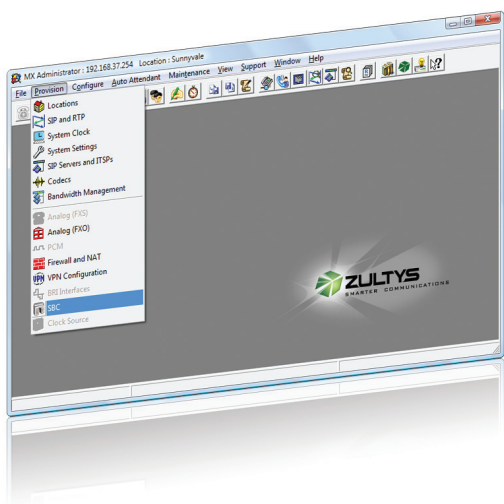


Overview

MXgroup is a software option for Zultys IP PBX products that allows multiple MX250 and MX30 systems to be interconnected over IP to form a single enterprise-wide unified communications system, making up to 128 separate offices appear as a single entity. It is easy to install an *MXgroup*, and it can seamlessly scale to support up to 10,000 users and enable global presence, free inter-site calls, secure communications and interactive collaboration across an entire group, regardless of where the IP PBXs are located – whether it's in the same building or in another country altogether. Each location is independent of issues that may affect others, providing system redundancy and rapid disaster recovery.

Key Features

- Seamless connectivity between up to 128 locations
- Group-wide internal extension dialing, voicemail and fax
- Group-wide Presence and Instant Messaging
- Supports Teleworkers and Remote Access
- Survivability and Disaster Recovery — failure of any node does not affect other locations
- Scales seamlessly to support up to 10,000 users in a group
- Calls routed over WAN to save toll charges
- Secure communications with encryption
- Distributed Agents for call center functionality
- Group can be administered from multiple locations
- Rapid configuration and activation



Seamless Connectivity

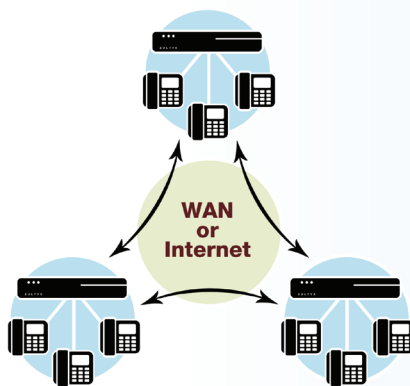
An *MXgroup* of MX250 and MX30 IP PBXs appear as a unified system, extending the features of one IP PBX across the entire group, to as many as 128 locations. Each IP PBX maintains a complete list of all users in the group and makes this list available to every user. Using MXIE, the Zultys graphical desktop presence and communications agent, people across the group can see the presence (Available, In a Meeting, At Lunch, etc.) of any other user. Users also have full click-to-call, fax, conference, web-conference and Instant Message service.

Roaming Access & Teleworker Support

Users can log into any location within an *MXgroup*. They may log-in to any office they are visiting, or work remotely and be linked into an office over the Internet or private VPN. That person's presence is immediately visible to all, and the users can all exchange instant messages exactly as before. The user can be reached normally through their internal extension number, or via their standard company number. The user receives notification of voice mails as before and can access their voice mail through MXIE or through the phone, just as at the home location.

Toll Bypass and Least Cost Routing

All internal calls are routed over the WAN so that no PSTN toll charges apply. The system administrator can configure the dial plan so that certain calls to the PSTN are routed over the WAN to a remote IP PBX and then to the PSTN from that remote location. This allows the lowest cost routes to be used for any outbound calls.



Security and Compression

All communications between sites can use the Advanced Encryption Standard (AES). This provides completely secure communications for the enterprise if the data is travelling over the public Internet. Speech calls between sites can be compressed to reduce the bandwidth that is used and increase the quality of communications.

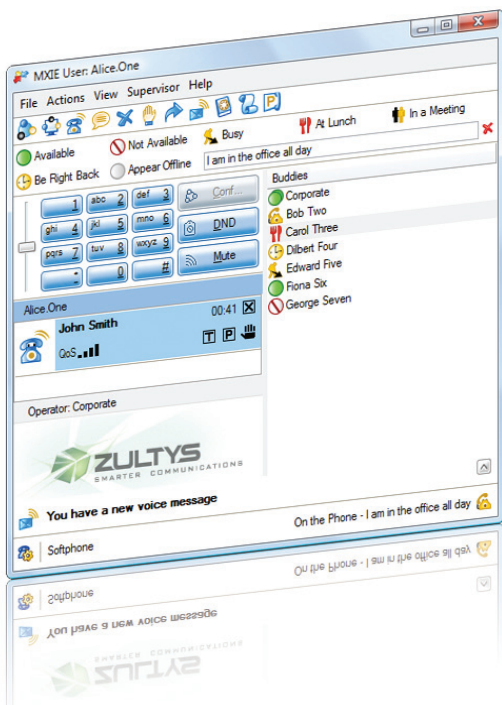
Installation and Administration

It's easy to install and maintain a group of MX250/MX30 systems. Once the individual IP PBXs are configured as standalone systems with IP connectivity among the locations, connecting them as part of a group can be accomplished in just a few minutes.

This is all accomplished using the Administration UI software; the same tool used to configure and maintain

all aspects of the system. IP PBXs can be added to or removed from the group quickly. As changes are made to the group, the IP PBXs synchronize their data bases and immediately make the updated list of users available to everyone in the enterprise.

Rank	Location	Address	Disconnect Timeout	Communication Status	Data Sync Status	System Local Time
1	Zultys_Lab_OH	192.168.15.150	10	OK	Synchronized	3/18/2009 2:19:30 PM
2	Dallas	192.168.16.150	10	Connection OK	Synchronized	3/18/2009 2:19:30 PM
3	Atlanta	192.168.17.150	10	Connection OK	Synchronized	3/18/2009 2:19:30 PM
4	Beijing	192.168.18.150	10	Connection OK	Synchronized	3/18/2009 2:19:30 PM
5	Chicago	192.168.19.150	10	Connection OK	Synchronized	3/18/2009 2:19:30 PM
6	London	192.168.20.150	10	Connection OK	Synchronized	3/18/2009 2:19:30 PM
7	Moscow	192.168.21.150	10	Connection OK	Synchronized	3/18/2009 2:19:30 PM
8	New York	192.168.22.150	10	Connection OK	Synchronized	3/18/2009 2:19:30 PM
9	Sunnyvale	192.168.51.150	10	Connection OK	Synchronized	3/18/2009 2:19:30 PM
10	Tokyo	192.168.51.150	10	Connection OK	Synchronized	3/18/2009 2:19:30 PM



Disaster Recovery and Survivability

An *MXgroup* is organized as a peer-to-peer network. This means that a failure of any one location does not affect the operation of any other location. If there is PSTN access at each site, users can make and receive calls externally when the WAN fails. In this case, and for certain users (selected by the system administrator), calls between sites can be automatically routed over the PSTN. This enables a business to continue to operate even if other sites may be off-line for any reason. Any IP PBX can be provisioned from any location, provided the person has the rights to do so. This removes the necessity of having skilled staff at each location.

Standards Based Devices

The MX250 and MX30 systems are 100% based on open standards, and can operate with any SIP device that complies with the SIP specifications. An enterprise can deploy the Zultys family of feature-rich ZIP 5 SIP phones, third party SIP phones, and applications from Zultys or other manufactures to provide services to any user.

Zultys, Inc., the Zultys logo, the Zultys mark, MX250, MXIE, MXgroup, and Foreign Login are trademarks or registered trademarks of Zultys, Inc. All other trademarks used herein are the property of their respective owners. ©2009 Zultys, Inc. All rights reserved. Document Number 96-35509-04.